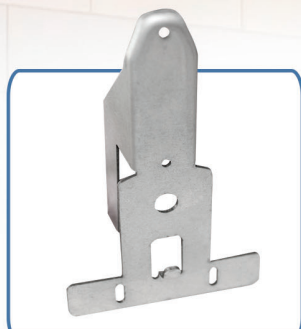


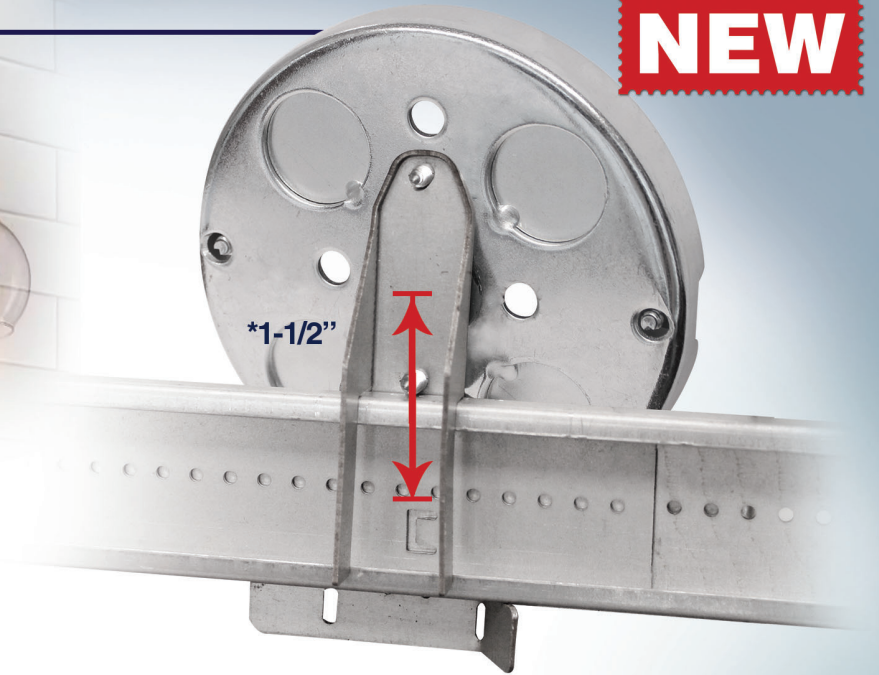
BARB-SLIM DROP-ON SLIDER BRACKET

orbit
Orbit Industries, Inc.

NEW



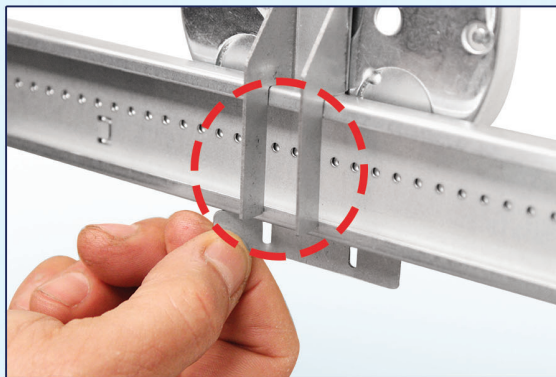
NEW BARB-SLIM
Drop-on-Bar Slider Bracket



Shown installed with 4PB and BHA-16

*Ensure box center is positioned 1-1/2" above the BHA-16 or BHA-24 centerline for K.O. access.

THE FIRST AND ONLY VANITY LIGHT PREFAB SOLUTION



Box assemblies can be prefabricated onto a BHA before or after arriving to the job site

- » For use with 4" Pancake Boxes and Multigang boxes
- » **Easy** installation in obstructed locations
- » **Quick** installation saves time
- » Position lighting fixture with **precision**

See BARB & BARB-CS for Drop-On-Bar Slider Brackets that mount 4" & 4-11/16" Sq. Boxes.

PATENT PENDING



For product literature, samples, or to speak with an expert:
213-451-6091 | Info@OrbitElectric.com

ORBFLY-34

BARB-SLIM DROP-ON SLIDER BRACKET

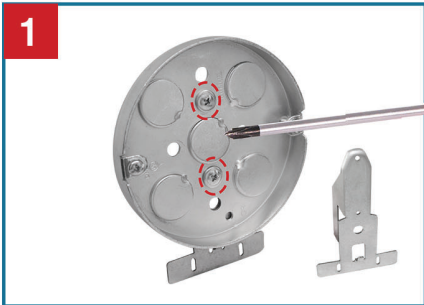


DROP-ON-BAR SLIDER BRACKET FOR **PANCAKE BOX**

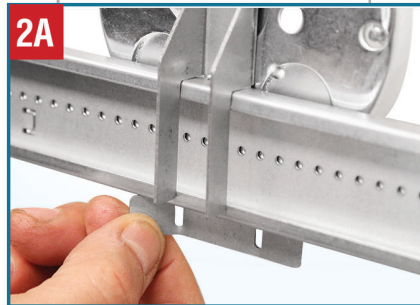
Preassembled

-OR-

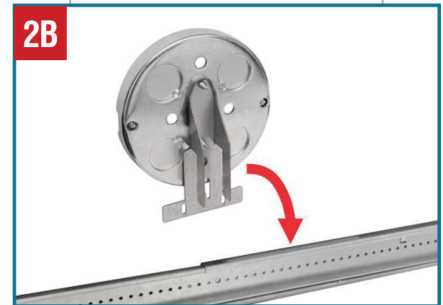
In-Field



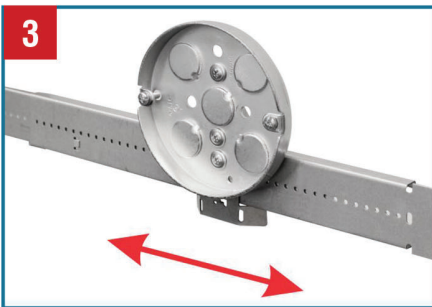
1
Mount using two sharp point wafer head screws. (Note: Ensure the pancake box has four holes aligned properly when installing the screws.)



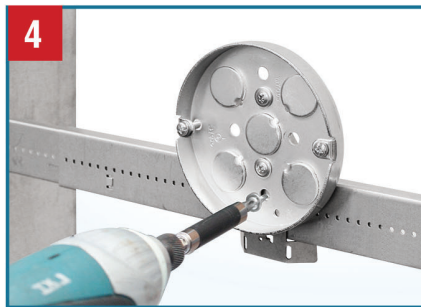
2A
For preassembly and transportation, drop the BARB-SLIM onto the Bar Hanger and bend the locking tab to secure it in place.



2B
Place the BARB-SLIM onto the Bar Hanger. Ensure the Bar Hanger height is 1-1/2" lower than the desired position of the light fixture. (Note: The BARB-SLIM raises the pancake box by 1-1/2" to allow back KO access.)



3
Adjust the BARB-SLIM left to right on the Bar Hanger for the desired location.

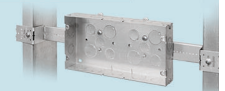


4
Secure the BARB-SLIM to the Bar Hanger at the front face attachment point using one Tek Screw.

DROP-ON-BAR SLIDER BRACKET FOR **MULTIGANG BOXES**



SCAN ME!



Cat. No.	Description	Std. Pkg.
BARB-SLIM NEW!	Drop-On-Bar Slider Bracket for Pancake & Multigang Boxes	50
BHA-16	11" to 18" Adjustable Box Bracket	50
BHA-24	15-3/4" to 26" Adjustable Box Bracket	50